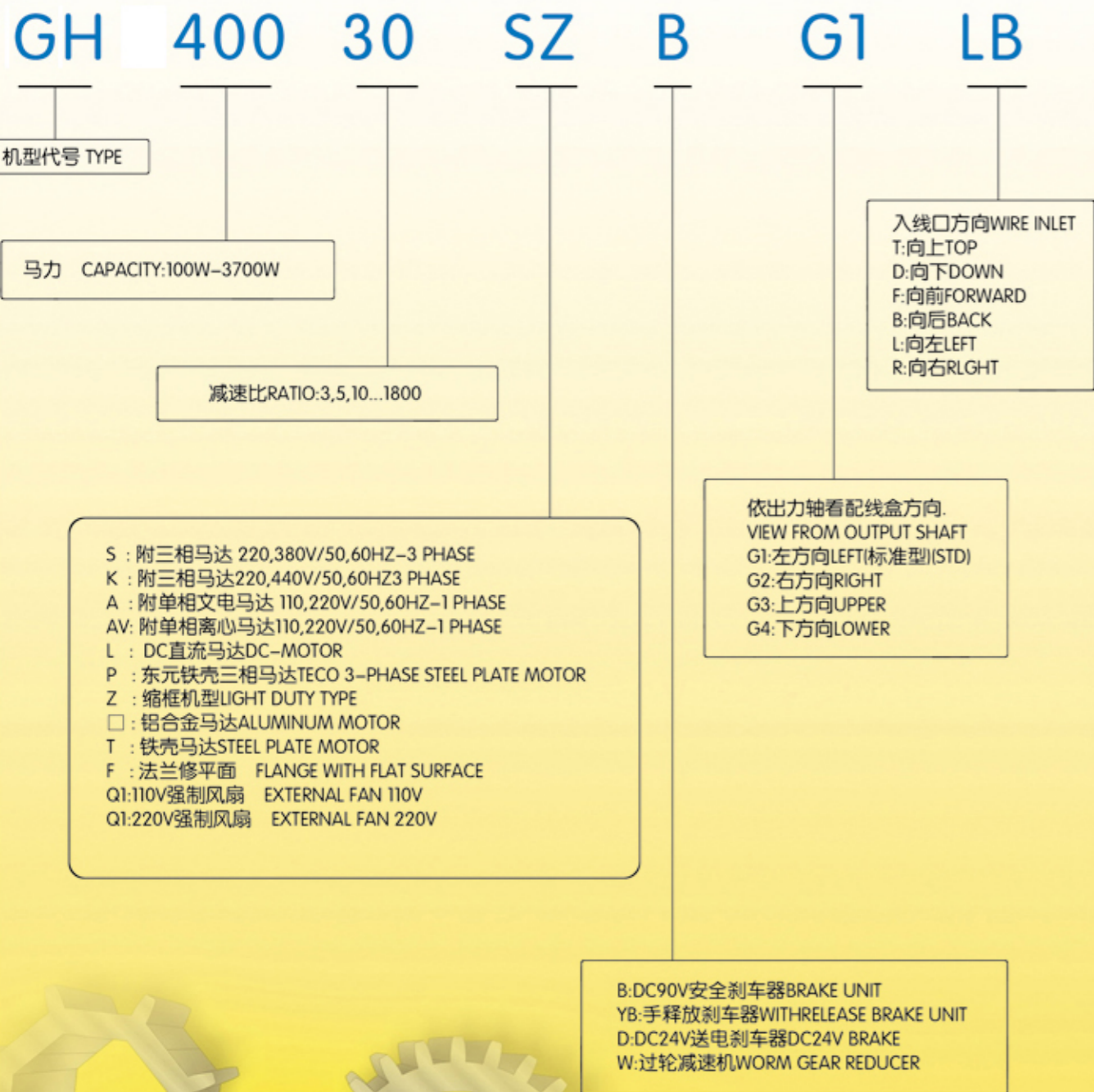


### 1-1 型号说明 (DESCRIPTION OF MODEL)



### 1-2 配线盒方向选定 (TERMINAL BOX DIRECTION)

TYPE	G1 - 左方向 LEFT SIDE	G2 - 右方向 RIGHT SIDE	G3 - 上方向 UPPER SIDE	G4 - 下方向 LOWER SIDE
GH型 GH TYPE				
	G1	G2	G3	G4
GV型 GV TYPE				
	G1	G2	G3	G4

### 1-3 入线口方向 (WIRE INLET DIRECTION)

LD	LT	RD	RT	TL	TR	DL	DR
LF	LB	RF	RB	TF	TB	DF	DB

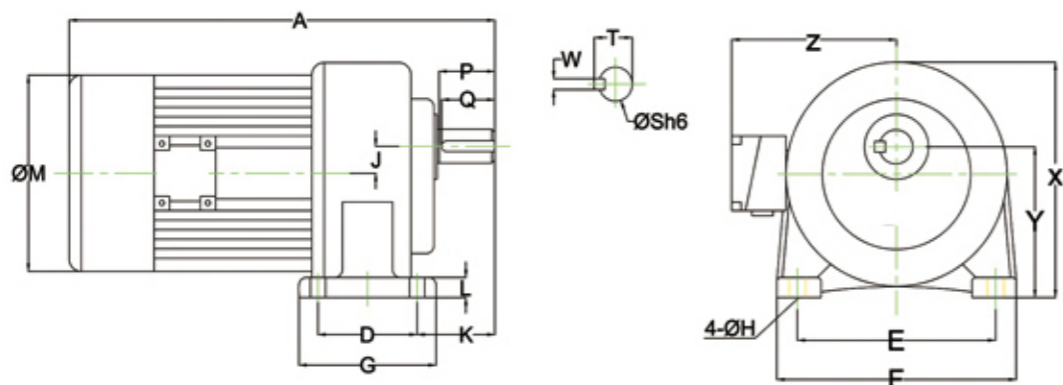
### 1-4 减速机兴透气塞安装位置示意图 (REDUCER AND VENTILATION INSTALLATION)

GH 机型 安装 范例			
	H0(标准STANDARD)(TDT正立TDT STAND)	H3(左侧LEFT SIDE)	H6(倒装INVERT)
	H9(右侧RIGHT SIDE)	HU(轴向上SHAFT UP)	HD(轴向下SHAFT DOWN)
GV 机型 安装 范例			
	V0(标准STANDARD)(TDT正立TDT STAND)	V3(TDT顺转90° TDT CLOCKWISE 90°)	V6(TDT顺转180° TDT CLOCKWISE 180°)
	V9(TDT逆转90° TDT LEFT TURN 90°)	VU(轴向上SHAFT UP)	TDT(轴向下SHAFT DOWN)

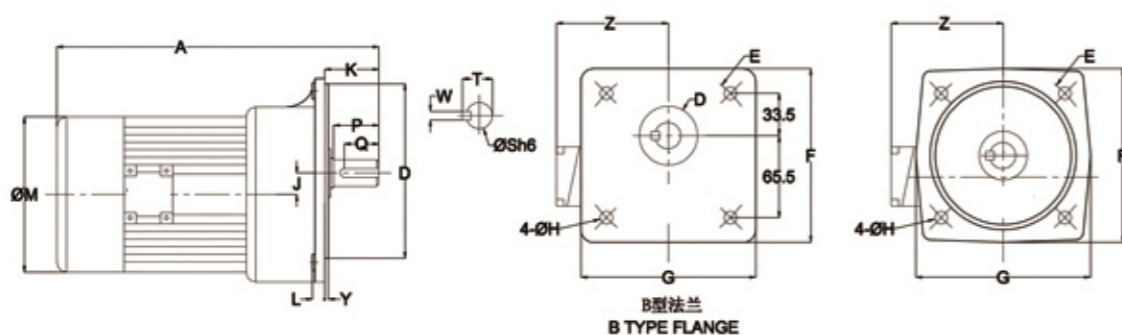
备注: 1.除标准安装方式外, 其余安装方式均需先告知本司。  
NOTE: 1. IN ADDITION TO THE STANDARD INSTALLATION, THE OTHER INSTALLATION IS REQUIRED PRIOR NOTICE OF THE COMPANY.

GH..S 卧式  
GH..S HORIZONTAL TYPEGV..S 立式  
GV..S VERTICAL TYPE

## 卧式附三相 HORIZONTAL TYPE



## 立式附三相 VERTICAL TYPE



## 出力轴尺寸 OUTPUT SHAFT

型号 SIZE(S)	出力轴 SHAFT			键槽 KEYWAY			键 KEY
	S h6	P	W	T	Q		SPEC'
18	φ 18	30	5	20.2	27		5*5*27
22	φ 22	40	7	25	35		7*7*35
28	φ 28	45	7	31.1	40		7*7*40
32	φ 32	55	10	35.5	50		10*8*50
40	φ 40	65	10	43.5	60		10*8*60
50	φ 50	80	14	54	75		14*9*75

适用机型APPLICABLE MODELS:GH..S,GH..ST,GH..SB,GH..STB,GV..S,GV..ST,GV..SB,GV..STB

## 卧式 HORIZONTAL TYPE (Dimension in mm)

马力 KW	减速比 RATIO	本体 CODE	型号 SIZE(S)	A	A1	A2	D	E	F	G	H	J	K	L	M	X	Y	Z
100W 1/8 HP	3-50	1 #	18	250	250	250	40	110	135	65	9	16	50	10	133	138	88.5	120
	60-200	2 #	22	280	280	280	65	130	158	90	11	17.5	60	13	133	152	97.5	120
200W 1/4 HP	3-10	1 #	18	285	285	285	40	110	135	65	9	16	50	10	133	138	88.5	120
	15-90	2 #	22	315	315	315	65	130	158	90	11	17.5	60	13	133	152	97.5	120
	100-200	3 #	28	350	350	350	90	140	178	120	11	23	68	17	133	178	11.6	120
400W 1/2 HP	3-10	2 #	22	330	330	330	65	130	158	90	11	17.5	60	13	167	152	97.5	135
	15-90	3 #	28	360	360	360	90	140	178	120	11	23	68	17	167	178	116	135
	100-200	4 #	32	395	395	395	130	170	210	165	13	30	70	23	167	212	140	135
750W 1 HP	3-25	3 #	28	380	380	380	90	140	178	120	11	23	68	17	167	178	116	135
	30-120	4 #	32	410	410	410	130	170	210	165	13	30	70	23	167	212	140	135
	125-200	5 #	40	465	465	465	150	210	265	198	15	36	89	24	167	250	162	135
1500W 2 HP	3-30	4 #	32	450	450	450	130	170	210	165	13	30	70	23	192	212	140	146
	40-100	5 #	40	510	510	510	150	210	265	198	15	36	89	24	192	250	162	146
2200W 3 HP	3-40	5 #	40	520	520	520	150	210	265	198	15	36	89	24	220	250	162	160
	45-100	6 #	50	580	580	580	170	265	321	238	18	51	120	31.5	220	308	200	160
3700W 5 HP	3-10	5 #	40	560	560	560	150	210	265	198	15	36	89	24	220	250	162	160
	15-60	6 #	50	620	620	620	170	265	321	238	18	51	120	31.5	220	308	200	160

## 立式 VERTICAL TYPE (Dimension in mm)

马力 KW	减速比 RATIO	本体 CODE	型号 SIZE(S)	A	A1	A2	D	E	F	G	H	J	K	L	M	Y	Z
100W 1/8 HP	3-50	1 #	*18	250	250	250	50	140	120	120	9	16	40	12	133	6	120
	60-200	2 #	22	280	280	280	148	185	175	165	11	17.5	48	12	133	3	120
200W 1/4 HP	3-10	1 #	*18	285	285	285	50	140	120	120	9	16	40	12	133	6	120
	15-90	2 #	22	315	315	315	148	185	175	165	11	17.5	48	12	133	3	120
	100-200	3 #	28	350	350	350	170	220	205	195	12	23	58	13	133	3	120
400W 1/2 HP	3-10	2 #	22	330	330	330	148	185	175	165	11	17.5	48	12	167	3	135
	15-90	3 #	28	360	360	360	170	220	205	195	12	23	58	13	167	3	135
	100-200	4 #	32	395	395	395	185	255	248	225	15	30	65	16	167	3	135
750W 1 HP	3-25	3 #	28	380	380	380	170	220	205	195	12	23	58	13	167	3	135
	30-120	4 #	32	410	410	410	185	255	248	225	15	30	65	16	167	3	135
	125-200	5 #	40	465	465	465	230	310	291	272	15	36	85	21	167	5	135
1500W 2 HP	3-30	4 #	32	450	450	450	185	255	248	225	15	30	65	16	192	3	146
	40-100	5 #	40	510	510	510	230	310	291	272	15	36	85	21	192	5	146
2200W 3 HP	3-40	5 #	40	520	520	520	230	310	291	272	15	36	85	21	220	5	160
	45-100	6 #	50	580	580	580	280	390	372	342	18	51	92	25	220	5	160
3700W 5 HP	3-10	5 #	40	560	560	560	230	310	291	272	15	36	85	21	220	5	160
	15-60	6 #	50	620	620	620	280	390	372	342	18	51	92	25	220	5	160

备注: A : 三相铝壳马达. WITH 3-PHASE ALUMINUM MOTOR.  
A2 : 三相马达附刹车器. WITH 3-PHASE BRAKE MOTOR.A1 : 三相铁壳马达. WITH 3-PHASE STEEL PLATE MOTOR.  
\* : 属于B型出力法兰. BELONG TO B TYPE OUTPUT FLANGE.

立式附三相(缩框)铝壳(刹车)马达减速机 2 # 本体B型法兰

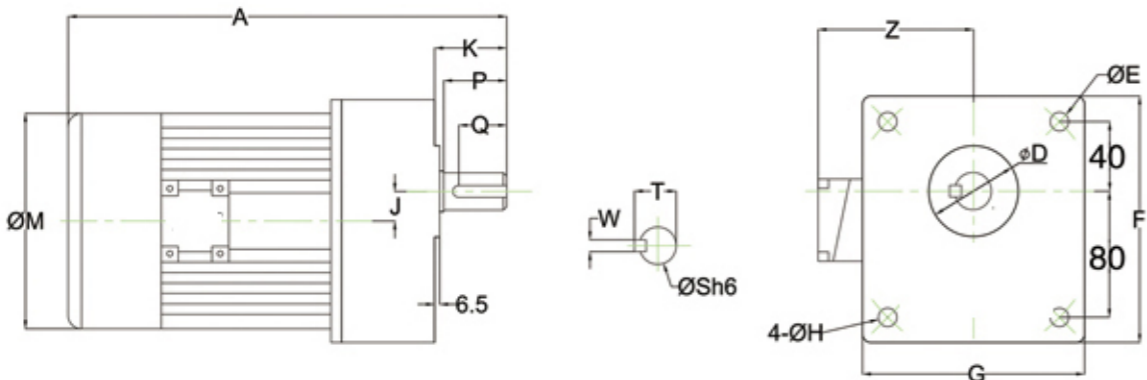
VERTICAL(LIGHT DUTY)TYPE WITH ALUMINUM/STEEL PALTE 3-PHASE(BRAKE)MOTOR 2#CODE B TYPE FLANGE



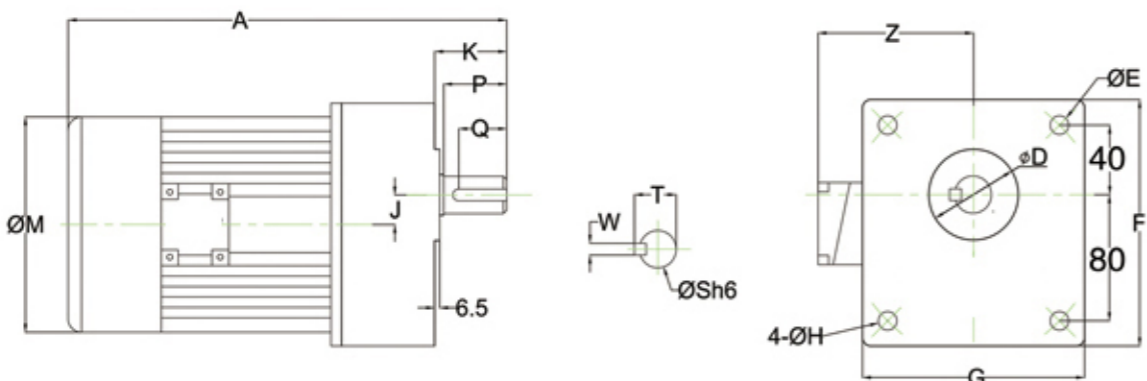
GV..S(TV..SB)附三相铝壳  
GV..S(TV..SB)VERTICAL TYPE

GV..SZ(TV..SZB)附三相缩框铝壳  
GV..SZ(TV..SZB)VERTICAL LIGHT DUTY TYPE

附三相铝壳VERTICAL TYPE



附三相缩框铝壳VERTICAL LIGHT DUTY TYPE



出力轴尺寸 OUTPUT SHAFT

型号 SIZE(S)	出力轴 SHAFT			键槽 KEYWAY			键 KEY
	Sh6	P	W	T	Q		SPEC'
22	φ 22	40	7	25	35		7*7*35

适用机型APPLICABLE MODELS:GV..S,GV..ST,GH..SB,GV..STB,GV..S,GV..ST,GV..SB,GV..STB

VERTICAL(LIGHT DUTY)TYPE WITH ALUMINUM/STEEL PALTE 3-PHASE(BRAKE)MOTOR-2# CODE B TYPE FLANGE

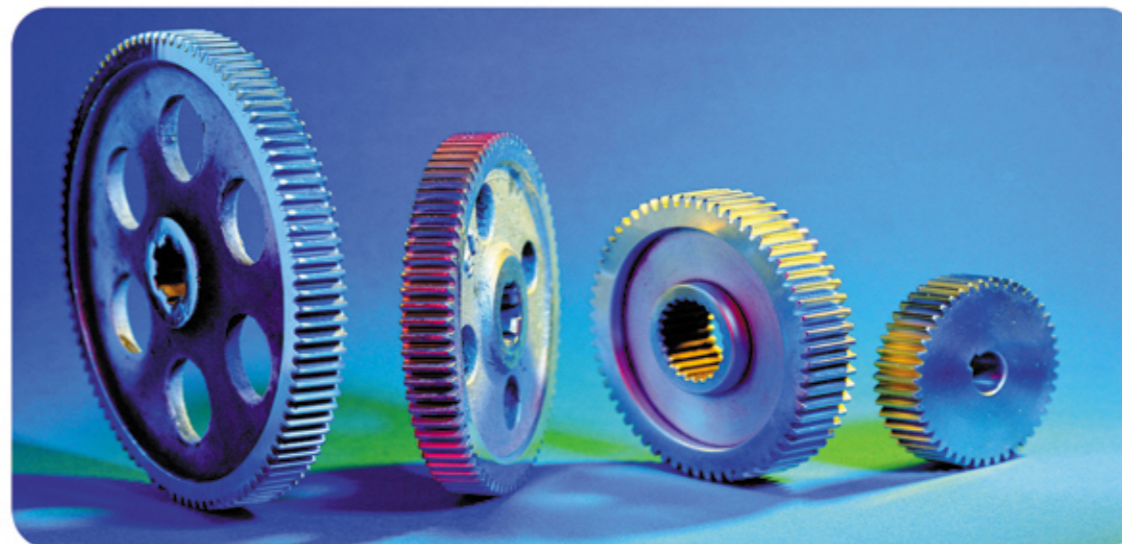
附三相铝壳VERTICAL TYPE(Dimension in mm)

马力 KW	减速比 RATIO	本体 CODE	型号 SIZE(S)	A	A1	A2	D	E	F	G	H	J	K	M	Z
100W 1/8 HP	60-200	2#	*22	278	278	278	55	170	146	146	11	19.662	50	133	120
200W 1/4 HP	15-90	2#	*22	315	315	315	55	170	146	146	11	19.662	50	133	120
400W 1/2 HP	3-10	2#	*22	330	330	330	55	170	146	146	11	19.662	50	167	135

附三相缩框铝壳VERTICAL LIGHT DUTY TYPE(Dimension in mm)

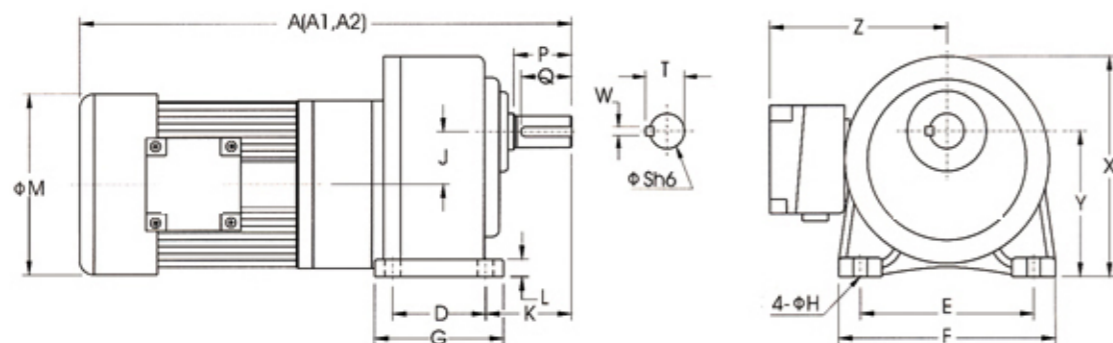
马力 KW	减速比 RATIO	本体 CODE	型号 SIZE(S)	A	A1	A2	D	E	F	G	H	J	K	M	Z
200W 1/4 HP	100-200	2#	*22	315	315	315	55	170	146	146	11	19.662	50	133	120
400W 1/2 HP	15-90	2#	*22	330	330	330	55	170	146	146	11	19.662	50	167	135
750W 1 HP	3-25	2#	*22	350	350	350	55	170	146	146	11	19.662	50	167	135

备注: A: 三相铝壳马达. WITH 3-PHASE ALUMINUM MOTOR. A1: 三相铁壳马达. WITH 3-PHASE STEEL PLATE MOTOR.  
A2: 三相马达附刹车器. WITH 3-PHASE BRAKE MOTOR. \*: 属于B型出力法兰. BELONG TO B TYPE OUTPUT FLANGE.  
此本体同样适用机型APPLICABLE MODELS:GVM 立式入力法兰齿轮减速机 GVM FLANGE TYPE WITH VERTICAL MOTOR  
GVD立式双轴齿轮减速机 GVD DOUBLE SHAFT TYPE WITH VERTICAL MOTOR

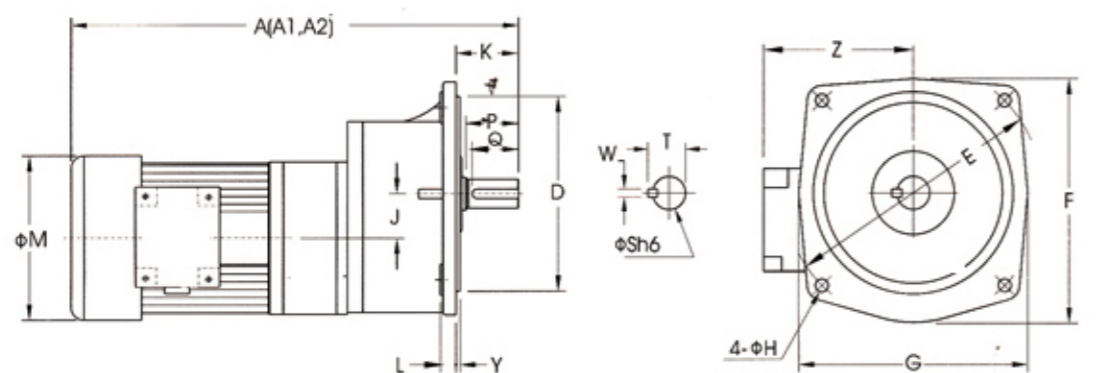


GH..S 卧式  
GH..S HORIZONTAL TYPEGV..S 立式  
GV..S VERTICAL TYPE

## 卧式高速比HORIZONTAL HIGH RATIO TYPE



## 立式高速比VERTICAL HIGH RATIO TYPE



## 出力轴尺寸 OUTPUT SHAFT

型号 SIZE(S)	出力轴 SHAFT		键槽 KEYWAY			键 KEY
	S h6	P	W	T	Q	SPEC'
28	$\phi 28$	45	7	31.1	40	7*7*40
32	$\phi 32$	55	10	35.5	50	10*8*50
40	$\phi 40$	65	10	43.5	60	10*8*60
50	$\phi 50$	80	14	54	75	14*9*75

## 卧式高速比 HORIZONTAL HIGH RATIO TYPE (Dimension in mm)

马力 KW	减速比 RATIO	本体 CODE	型号 SIZE(S)	A	A1	A2	D	E	F	G	H	J	K	L	M	X	Y	Z
100W 1/8 HP	250-1800	1#+3#	28	370	370	370	90	140	178	120	11	39	68	17	133	178	116	120
200W 1/4 HP	250-1800	2#+4#	32	470	470	470	130	170	210	165	13	47.5	70	23	133	212	140	120
400W 1/2 HP	250-1800	3#+5#	40	550	550	550	150	210	265	198	15	59	89	24	167	250	162	135
750W 1 HP	250-1800	3#+6#	50	620	620	620	170	265	321	283	18	74	120	31.5	167	308	200	135
1500W 2 HP	250-1800	4#+6#	50	690	690	690	170	265	321	283	18	81	120	31.5	192	308	200	146

## 立式高速比 VERTICAL HIGH RATIO TYPE (Dimension in mm)

马力 KW	减速比 RATIO	本体 CODE	型号 SIZE(S)	A	A1	A2	D	E	F	G	H	J	K	L	M	Y	Z
100W 1/8 HP	250-1800	1#+3#	28	370	370	370	170	220	205	195	12	39	58	13	133	3	120
200W 1/4 HP	250-1800	2#+4#	32	470	470	470	185	255	248	225	15	47.5	65	16	133	3	120
400W 1/2 HP	250-1800	3#+5#	40	550	550	550	230	310	291	272	15	59	85	21	167	5	135
750W 1 HP	250-1800	3#+6#	50	620	620	620	280	390	372	342	18	74	92	25	167	5	135
1500W 2 HP	250-1800	4#+6#	50	690	690	690	280	390	372	342	18	81	92	25	192	5	146

备注: A: 三相铝壳马达. WITH 3-PHASE ALUMINUM MOTOR.

A1: 三相铁壳马达. WITH 3-PHASE STEEL PLATE MOTOR.

A2: 三相马达附刹车器. WITH 3-PHASE BRAKE MOTOR.

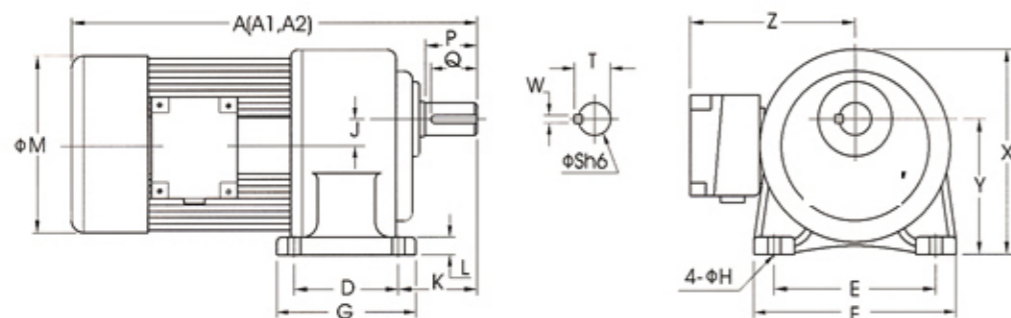




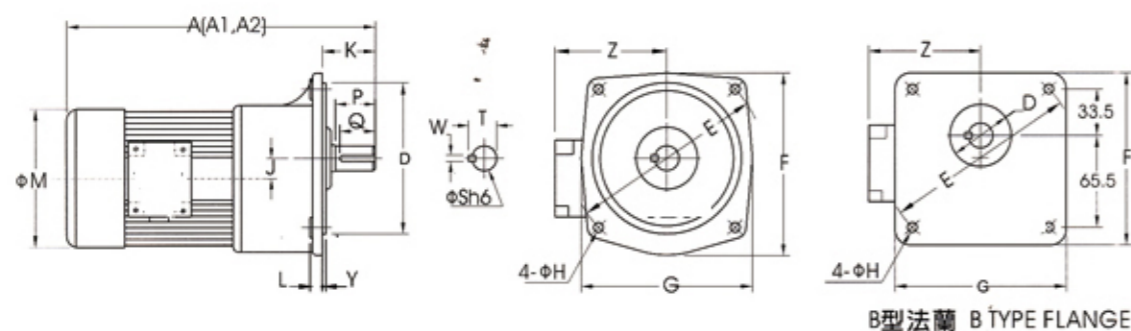
GH..SZ 卧式附三相缩框  
GH..SZ HORIZONTAL LIGHT DUTY TYPE

GV..SZ 立式附三相缩框  
GV..SZ VERTICAL LIGHT DUTY TYPE

### 卧式附三相缩框 HORIZONTAL LIGHT DUTY TYPE



### 立式附三相缩框 VERTICAL LIGHT DUTY TYPE



### 出力轴尺寸 OUTPUT SHAFT

型号 SIZE(S)	出力轴 SHAFT		键槽 KEYWAY			键 KEY
	S h6	P	W	T	Q	SPEC'
18	φ 18	30	5	20.2	27	5*5*27
22	φ 22	40	7	25	35	7*7*35
28	φ 28	45	7	31.1	40	7*7*40
32	φ 32	55	10	35.5	50	10*8*50
40	φ 40	65	10	43.5	60	10*8*60

适用机型 APPLICABLE MODELS: GH..SZ, GH..STZ, GH..SZB, GH..STZB, GV..SZ, GV..STZ, GV..SZB, GV..STZB

### 卧式附三相缩框 HORIZONTAL LIGHT DUTY TYPE (Dimension in mm)

马力 KW	减速比 RATIO	本体 CODE	型号 SIZE(S)	A	A1	A2	D	E	F	G	H	J	K	L	M	X	Y	Z
100W 1/8 HP	60-200	1#	18	250	250	250	40	110	135	65	9	16	50	10	133	138	88.5	120
200W 1/4 HP	15-90	1#	18	285	285	285	40	110	135	65	9	16	50	10	133	138	88.5	120
	100-200	2#	22	315	315	315	65	130	158	90	11	17.5	60	13	133	152	97.5	120
400W 1/2 HP	15-90	2#	22	330	330	330	65	130	158	90	11	17.5	60	13	167	152	97.5	135
	100-200	3#	28	360	360	360	90	140	178	120	11	23	68	17	167	178	116	135
750W 1 HP	3-25	2#	22	330	330	330	65	130	158	90	11	17.5	60	13	167	152	97.5	135
	30-120	3#	28	380	380	380	90	140	178	120	11	23	68	17	167	178	116	135
	125-200	4#	32	410	410	410	130	170	210	165	13	30	70	23	167	212	140	135
1500W 2 HP	3-30	3#	28	420	420	420	90	140	178	120	11	23	68	17	192	178	116	146
	40-100	4#	32	450	450	450	130	170	210	165	13	30	70	23	192	212	140	146
	110-150	5#	40	510	510	510	150	210	265	198	15	36	89	24	192	250	162	146
2200W 3 HP	45-80	5#	40	520	520	520	150	210	265	198	15	36	89	24	220	250	162	160
3700W 5 HP	15-60	5#	40	560	560	560	150	210	265	198	15	36	89	24	220	250	162	160

### 立式附三相缩框 VERTICAL LIGHT DUTY TYPE (Dimension in mm)

马力 KW	减速比 RATIO	本体 CODE	型号 SIZE(S)	A	A1	A2	D	E	F	G	H	J	K	L	M	Y	Z
100W 1/8 HP	60-200	1#	*18	250	250	250	50	140	120	120	9	16	40	12	133	6	120
200W 1/4 HP	15-90	1#	*18	285	285	285	50	140	120	120	9	16	40	12	133	6	120
	100-200	2#	22	315	315	315	148	185	175	165	11	17.5	48	12	133	3	120
400W 1/2 HP	15-90	2#	22	330	330	330	148	185	175	165	11	17.5	48	12	167	3	135
	100-200	3#	28	360	360	360	170	220	205	195	12	23	58	13	167	3	135
750W 1 HP	3-25	2#	22	330	330	330	148	185	175	165	11	17.5	48	12	167	3	135
	30-120	3#	28	380	380	380	170	220	205	195	12	23	58	13	167	3	135
	125-200	4#	32	410	410	410	185	255	248	225	15	30	65	16	167	3	135
1500W 2 HP	3-30	3#	28	420	420	420	170	220	205	195	12	23	58	13	192	3	146
	40-100	4#	32	450	450	450	185	255	248	225	15	30	65	16	192	3	146
	110-150	5#	40	510	510	510	230	310	291	272	15	36	85	21	192	5	146
2200W 3 HP	45-80	5#	40	520	520	520	230	310	291	272	15	36	85	21	220	5	160
3700W 5 HP	15-60	5#	40	560	560	560	230	310	291	272	15	36	85	21	220	5	160

备注: A : 三相铝壳马达. WITH 3-PHASE ALUMINUM MOTOR.

A1 : 三相铁壳马达. WITH 3-PHASE STEEL PLATE MOTOR.

A2 : 三相马达附刹车器. WITH 3-PHASE BRAKE MOTOR.

\* : 属于B型出力法兰. BELONG TO B TYPE OUTPUT FLANGE.

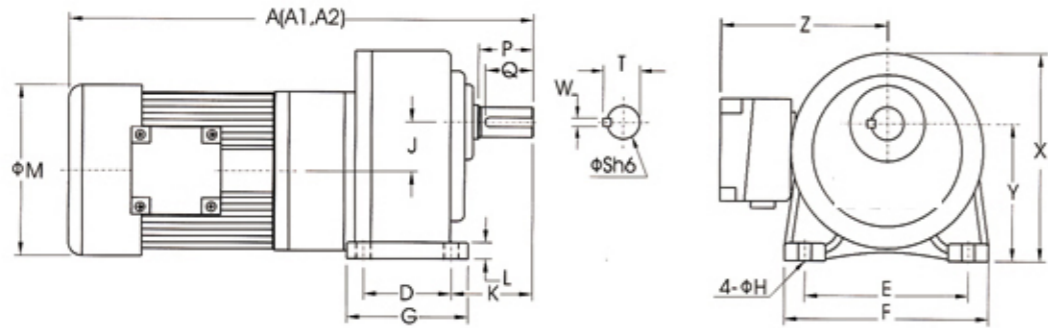
2-5 高速比附三相缩框铝/铁壳(刹车)减速机  
HIGH RATIO LIGHT DUTY TYPE WITH ALUMINUM/STEEL PLATE 3-PHASE(BRAKE)MOTOR



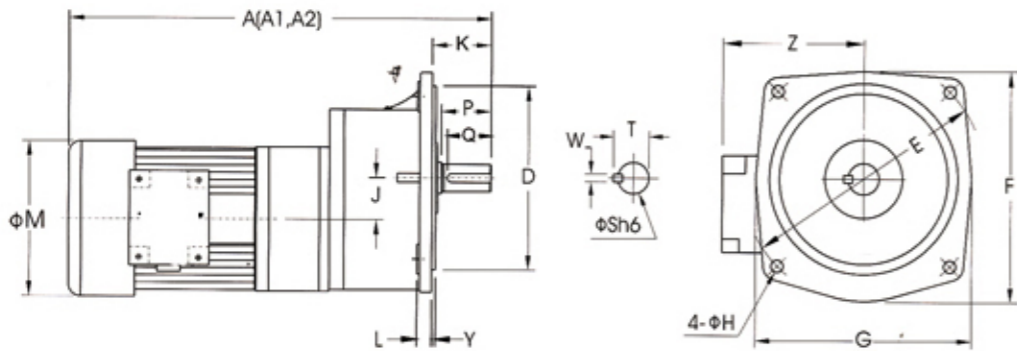
GH..S Z卧式高速比附三相缩框  
GH..S HORIZONTAL HIGHRATIO TYPE

GV..SZ 立式高速比附三相缩框  
GV..SZ VERTICAL HIGH RATIO TYPE

卧式高速比附三相缩框HORIZONTAL HIGH RATIO TYPE



立式高速比附三相缩框 VERTICAL HIGH RATIO TYPE



卧式高速比附三相缩框 HORIZONTAL HIGH RATIO TYPE (Dimension in mm)

马力 KW	减速比 RATIO	本体 CODE	型号 SIZE(S)	A	A1	A2	D	E	F	G	H	J	K	L	M	X	Y	Z
100W 1/8 HP	250-1800	1#+2#	22	345	345	345	65	130	158	90	11	33.5	60	13	133	152	97.5	120
200W 1/4 HP	250-1800	1#+3#	28	410	410	410	90	140	178	120	11	39	68	17	133	178	116	120
400W 1/2 HP	250-1800	2#+4#	32	480	480	480	130	170	210	165	13	47.5	70	23	167	212	140	135
750W 1 HP	250-1800	3#+5#	40	570	570	570	150	210	265	198	15	59	89	24	167	250	162	135

立式高速比附三相缩框 VERTICAL HIGH RATIO TYPE (Dimension in mm)

马力 KW	减速比 RATIO	本体 CODE	型号 SIZE(S)	A	A1	A2	D	E	F	G	H	J	K	L	M	Y	Z
100W 1/8 HP	250-1800	1#+2#	22	345	345	345	148	185	175	165	11	33.5	48	12	133	3	120
200W 1/4 HP	250-1800	1#+3#	28	410	410	410	170	220	205	195	12	39	58	13	133	3	120
400W 1/2 HP	250-1800	2#+4#	32	480	480	480	185	255	248	225	15	47.5	65	16	167	3	135
750W 1 HP	250-1800	3#+5#	40	570	570	570	230	310	291	272	15	59	85	21	167	5	135

备注: A : 三相铝壳马达. WITH 3-PHASE ALUMINUM MOTOR.  
A1 : 三相铁壳马达. WITH 3-PHASE STEEL PLATE MOTOR.  
A2 : 三相马达附刹车器. WITH 3-PHASE BRAKE MOTOR.

出力轴尺寸 OUTPUT SHAFT

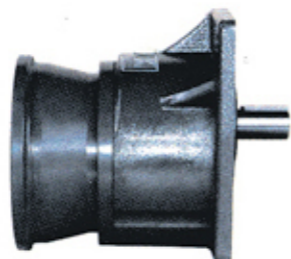
型号 SIZE(S)	出力轴 SHAFT			键槽 KEYWAY		键 KEY
	S h6	P	W	T	Q	SPEC'
22	φ 22	40	7	25	35	7*7*35
28	φ 28	45	7	31.1	40	7*7*40
32	φ 32	55	10	35.5	50	10*8*50
40	φ 40	65	10	43.5	60	10*8*60

适用机型APPLICABLE MODELS:GH..SZ,GH..STZ,GH..SZB,GH..STZB,GV..S,GV..SZT,GV..SZB,GV..STZB



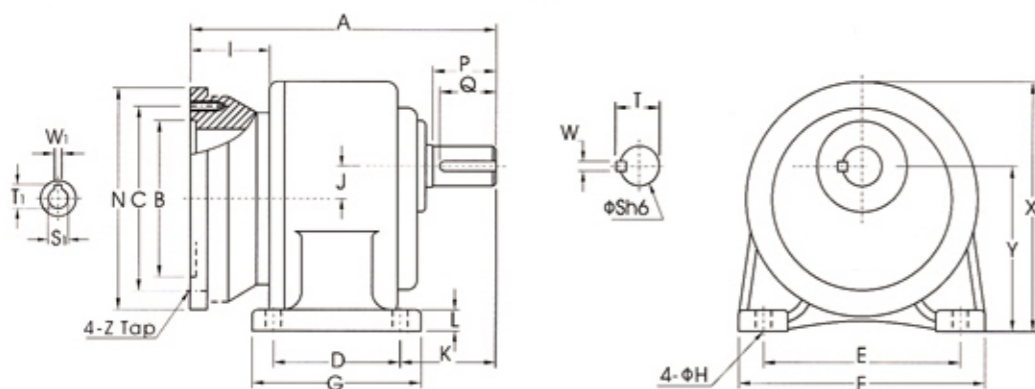


GHM 卧式入力法兰  
GHM HORIZONTAL TYPE

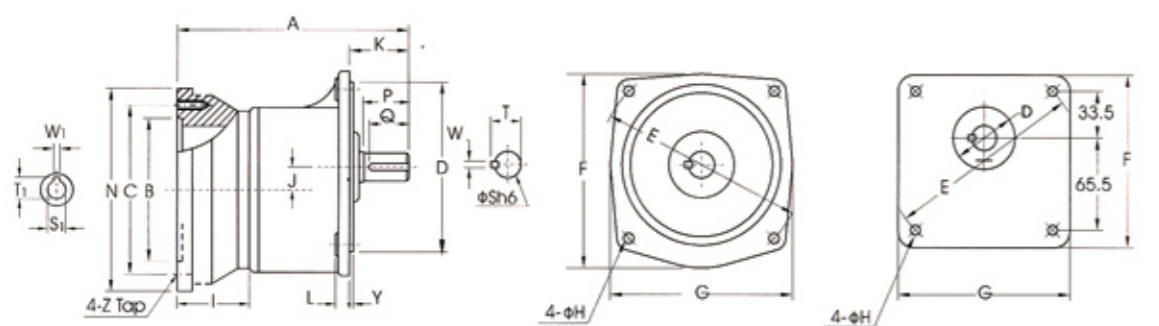


GVM 立式入力法兰  
GVM VERTICAL TYPE

卧式入力法兰 HORIZONTAL TYPE



立式入力法兰 VERTICAL TYPE



B型法蘭 B TYPE FLANGE

入力孔尺寸 INPUT BORE

马力 KW	入力孔 BORE		键槽 KEYWAY	
	S1	F7	W1	T1
1/4HP	φ 11		4	12.8
1/2HP	φ 14		5	16.3
1HP	φ 19		6	21.8
2HP	φ 24		8	27.3
3HP	φ 28		8	31.3
5HP	φ 28		8	31.3

出力轴尺寸 OUTPUT SHAFT

型号 SIZE(S)	出力轴 SHAFT		键槽 KEYWAY			键 KEY SPEC'
	S h6	P	W	T	Q	
18	φ 18	30	5	20.2	27	5*5*27
22	φ 22	40	7	25	35	7*7*35
28	φ 28	45	7	31.1	40	7*7*40
32	φ 32	55	10	35.5	50	10*8*50
40	φ 40	65	10	43.5	60	10*8*60
50	φ 50	80	14	54	75	14*9*75

卧式入力法兰 HORIZONTAL TYPE (Dimension in mm)

马力 KW	减速比 RATIO	型号 SIZE(S)	A	B	C	D	E	F	G	H	I	J	K	L	N	X	Y	Z
200W 1/4 HP	3-10	18	160	110	130	40	110	135	65	9	55	16	50	10	160	138	88.5	M8
	15-90	22	195	110	130	65	130	158	90	11	55	17.5	60	13	160	152	97.5	M8
	100-200	28	225	110	130	90	140	178	120	11	55	23	68	17	160	178	116	M8
400W 1/2 HP	3-10	22	195	110	130	65	130	158	90	11	55	17.5	60	13	160	152	97.5	M8
	15-90	28	225	110	130	90	140	178	120	11	55	23	68	17	160	178	116	M8
	100-200	32	255	110	130	130	170	210	165	13	55	30	70	23	160	212	140	M8
750W 1 HP	3-25	28	250	130	165	90	140	178	120	11	82	23	68	17	200	178	116	M10
	30-120	32	285	130	165	130	170	210	165	13	82	30	70	23	200	212	140	M10
	125-200	40	330	130	165	150	210	265	198	15	82	36	89	24	200	250	162	M10
1500W 2 HP	3-30	32	285	130	165	130	170	210	165	13	82	30	70	23	200	212	140	M10
	40-100	40	330	130	165	150	210	265	198	15	82	36	89	24	200	250	162	M10
2200W 3 HP	3-40	40	355	180	215	150	210	265	198	15	105	36	89	24	250	250	162	M12
	45-100	50	410	180	215	170	265	321	238	18	105	51	120	31.5	250	308	200	M12
3700W 5 HP	3-10	40	355	180	215	150	210	265	198	15	105	36	89	24	250	250	162	M12
	15-60	50	410	180	215	170	265	321	238	18	105	51	120	31.5	250	308	200	M12

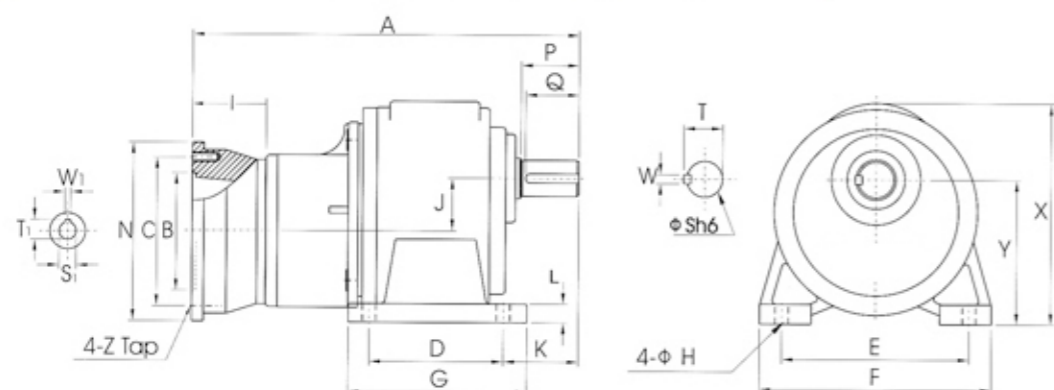
立式入力法兰 VERTICAL TYPE (Dimension in mm)

马力 KW	减速比 RATIO	型号 SIZE(S)	A	B	C	D	E	F	G	H	I	J	K	L	N	Y	Z
200W 1/4 HP	3-10	18	160	110	130	50	140	120	120	9	55	16	40	12	160	6	M8
	15-90	22	195	110	130	148	185	175	165	11	55	17.5	48	12	160	3	M8
	100-200	28	225	110	130	170	220	205	195	12	55	23	58	13	160	3	M8
400W 1/2 HP	3-10	22	195	110	130	148	185	175	165	11	55	17.5	48	12	160	3	M8
	15-90	28	225	110	130	170	220	205	195	12	55	23	58	13	160	3	M8
	100-200	32	255	110	130	185	255	248	225	15	55	30	65	16	160	3	M8
750W 1 HP	3-25	28	250	130	165	170	220	205	195	12	82	23	58	13	200	3	M10
	30-120	32	285	130	165	185	255	248	225	15	82	30	65	16	200	3	M10
	125-200	40	330	130	165	230	310	291	272	15	82	36	85	21	200	5	M10
1500W 2 HP	3-30	32	285	130	165	185	255	248	225	15	82	30	65	16	200	3	M10
	40-100	40	330	130	165	230	310	291	272	15	82	36	85	21	200	5	M10
2200W 3 HP	3-40	40	355	180	215	230	310	291	272	15	105	36	85	21	250	5	M12
	45-100	50	410	180	215	280	390	372	342	18	105	51	92	25	250	5	M12
3700W 5 HP	3-10	40	355	180	215	230	310	291	272	15	105	36	85	21	250	5	M12
	15-60	50	410	180	215	280	390	372	342	18	105	51	92	25	250	5	M12

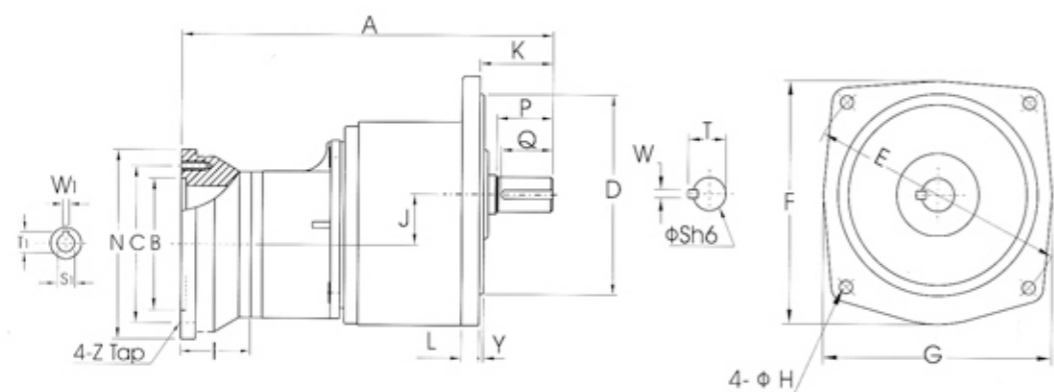
备注: 1. 配合IEC马达为主, AVAILABLE FOR IEC METRIC MOTOR.  
2. \*属于B型出力法兰.\* BELONG TO B TYPE OUTPUT FLANGE.

GHM 卧式入力法兰高速比  
GHM HORIZONTAL HIGH RATIO TYPEGVM 立式入力法兰高速比  
GVM VERTICAL HIGH RATIO TYPE

## 卧式入力法兰高速比 THM HORIZONTAL HIGH RATIO TYPE



## 立式入力法兰高速比 VERTICAL HIGH RATIO TYPE



## 入力孔尺寸 INPUT BORE

马力 KW	入力孔 BORE		键槽 KEYWAY	
	S1	F7	W1	T1
1/4HP	φ 11		4	12.8
1/2HP	φ 14		5	16.3
1HP	φ 19		6	21.8

## 出力轴尺寸 OUTPUT SHAFT

型号 SIZE(S)	出力轴 SHAFT		键槽 KEYWAY			键 KEY
	S h6	P	W	T	Q	SPEC'
32	φ 32	55	10	35.5	50	10*8*50
40	φ 40	65	10	43.5	60	10*8*60
50	φ 50	80	14	54	75	14*9*75

## 卧式入力法兰 HORIZONTAL TYPE (Dimension in mm)

马力 KW	减速比 RATIO	型号 SIZE(S)	A	B	C	D	E	F	G	H	I	J	K	L	N	X	Y	Z
200W 1/4 HP	250-1800	32	335	110	130	130	170	210	165	13	55	47.5	70	23	160	212	140	M8
400W 1/2 HP	250-1800	40	410	110	130	150	210	265	198	15	55	59	89	24	160	250	162	M8
750W 1 HP	250-1800	50	490	130	165	170	265	321	238	18	82	74	120	31.5	200	308	200	M10

## 立式入力法兰高速比 VERTICAL HIGH RATIO TYPE (Dimension in mm)

马力 KW	减速比 RATIO	型号 SIZE(S)	A	B	C	D	E	F	G	H	I	J	K	L	N	Y	Z
200W 1/4 HP	250-1800	32	335	110	130	185	255	248	225	15	55	47.5	65	16	160	3	M8
400W 1/2 HP	250-1800	40	410	110	130	230	310	291	272	15	55	59	85	21	160	5	M8
750W 1 HP	250-1800	50	490	130	165	280	390	372	342	18	82	74	92	25	200	5	M10

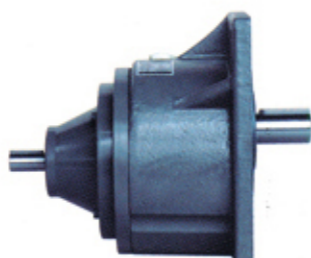
备注: 1. 配合IEC马达为主. AVAILABLE FOR IEC METRIC MOTOR.





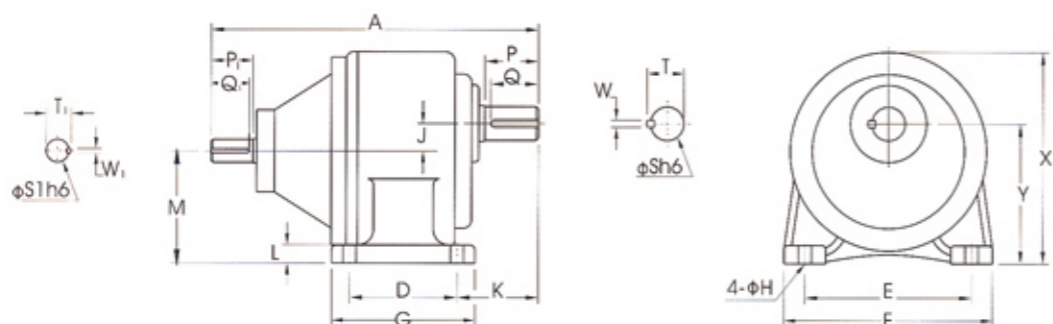


GHD 卧式双轴  
GHD HORIZONTAL TYPE

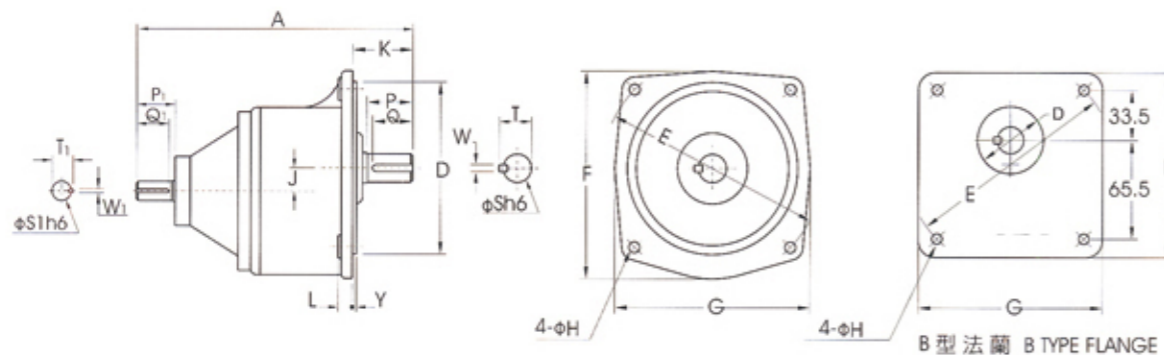


GV 立式双轴  
GV VERTICAL TYPE

### 卧式双轴 HORIZONTAL TYPE



### 立式双轴 VERTICAL TYPE



### 输入轴尺寸 INPUT SHAFT

KW	输入轴 SHAFT		键槽 KEYWAY			键 KEY
	S1 H6	P1	W1	T1	Q1	SPEC'
0.1/0.2	14	25	5	16.2	22	5*5*22
0.4	16	30	5	18.2	27	5*5*27
0.75	19	40	6	21.7	35	6*6*35
1.5	24	50	8	27.1	45	8*7*45
2.2	28	55	8	31.1	50	8*7*50
3.7	28	55	8	31.1	50	8*7*50

### 出力轴尺寸 OUTPUT SHAFT

型号 SIZE(S)	出力轴 SHAFT		键槽 KEYWAY			键 KEY
	S h6	P	W	T	Q	SPEC'
18	φ 18	30	5	20.2	27	5*5*27
22	φ 22	40	7	25	35	7*7*35
28	φ 28	45	7	31.1	40	7*7*40
32	φ 32	55	10	35.5	50	10*8*50
40	φ 40	65	10	43.5	60	10*8*60
50	φ 50	80	14	54	75	14*9*75

### 卧式双轴 HORIZONTAL TYPE (Dimension in mm)

马力 KW	减速比 RATIO	型号 SIZE(S)	A	D	E	F	G	H	J	K	L	M	X	Y
100W 1/8 HP	3-50	18	165	40	110	135	65	9	16	50	10	72.5	138	88.5
	60-200	22	195	65	130	158	90	11	17.5	60	13	80	152	97.5
200W 1/4 HP	3-10	18	165	40	110	135	65	9	16	50	10	72.5	138	88.5
	15-90	22	195	65	130	158	90	11	17.5	60	13	80	152	97.5
	100-200	28	255	90	140	178	120	11	23	68	17	93	178	116
400W 1/2 HP	3-10	22	235	65	130	158	90	11	17.5	60	13	80	152	97.5
	15-90	28	265	90	140	178	120	11	23	68	17	93	178	116
	100-200	32	300	130	170	210	165	13	30	70	23	110	212	140
750W 1 HP	3-25	28	275	90	140	178	120	11	23	68	17	93	178	116
	30-120	32	310	130	170	210	165	13	30	70	23	110	212	140
	125-200	40	365	150	210	265	198	15	36	89	24	126	250	162
1500W 2 HP	3-30	32	320	130	170	210	165	13	30	70	23	110	212	140
	40-100	40	373	150	210	265	198	15	36	89	24	126	250	162
2200W 3 HP	3-40	40	390	150	210	265	198	15	36	89	24	126	250	162
	45-100	50	450	170	265	321	238	18	51	120	31.5	149	308	200
3700W 5 HP	3-10	40	390	150	210	265	198	15	36	89	24	126	250	162
	15-60	50	450	170	265	321	238	18	51	120	31.5	149	308	200

### 立式双轴 VERTICAL TYPE (Dimension in mm)

马力 KW	减速比 RATIO	型号 SIZE(S)	A	D	E	F	G	H	J	K	L	Y
100W 1/8 HP	3-50	*18	165	50	140	120	120	9	16	40	12	6
	60-200	22	195	148	185	175	165	11	17.5	48	12	3
200W 1/4 HP	3-10	*18	165	50	140	120	120	9	16	40	12	6
	15-90	22	195	148	185	175	165	11	17.5	48	12	3
	100-200	28	255	170	220	205	195	12	23	58	13	3
400W 1/2 HP	3-10	22	235	148	185	175	165	11	17.5	48	12	3
	15-90	28	265	170	220	205	195	12	23	58	13	3
	100-200	32	300	185	255	248	225	15	30	65	16	3
750W 1 HP	3-25	28	275	170	220	205	195	12	23	58	13	3
	30-120	32	310	185	255	248	225	15	30	65	16	3
	125-200	40	365	230	310	291	272	15	36	85	21	5
1500W 2 HP	3-30	32	320	185	255	248	225	15	30	65	16	3
	40-100	40	373	230	310	291	272	15	36	85	21	5
2200W 3 HP	3-40	40	390	230	310	291	272	15	36	85	21	5
	45-100	50	450	280	390	372	342	18	51	92	25	5
3700W 5 HP	3-10	40	390	230	310	291	272	15	36	85	21	5
	15-60	50	450	280	390	372	342	18	51	92	25	5

备注: 1 \* 属于 B 型出力法兰. \*BELONG TO B TYPE OUTPUT FLANGE

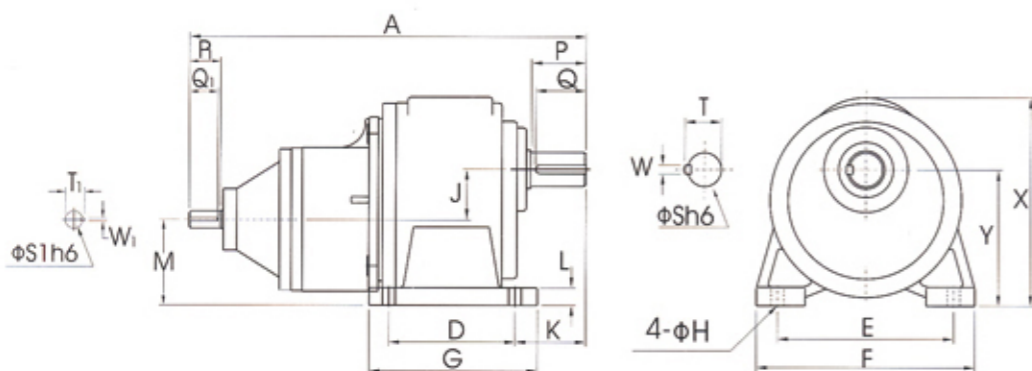


GHD 卧式高速比双轴  
GHD HORIZONTAL HIGH RATIO TYPE

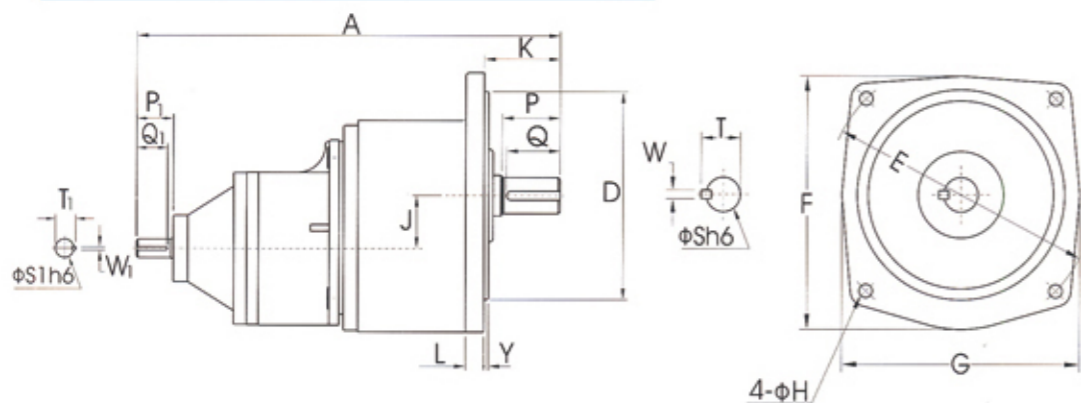


GVD 立式高速比双轴  
GVD VERTICAL HIGH RATIO TYPE

卧式高速比双轴 HORIZONTAL HIGH RATIO TYPE



立式高速比双轴 VERTICAL HIGH RATIO TYPE



输入轴尺寸 INPUT SHAFT

KW	输入轴 SHAFT		键槽 KEYWAY			键 KEY
	S1h6	P1	W1	T1	Q1	SPEC'
0.1	14	25	5	16.2	22	5*5*22
0.2	14	25	5	16.2	22	5*5*22
0.4	16	30	5	18.2	27	5*5*27
0.75	19	40	6	21.7	35	6*6*35

输出轴尺寸 OUTPUT SHAFT

型号 SIZE(S)	输出轴 SHAFT		键槽 KEYWAY			键 KEY
	S h6	P	W	T	Q	SPEC'
28	φ 28	45	7	31.1	40	7*7*40
32	φ 32	55	10	35.5	50	10*8*50
40	φ 40	65	10	43.5	60	10*8*60
50	φ 50	80	14	54	75	14*9*75

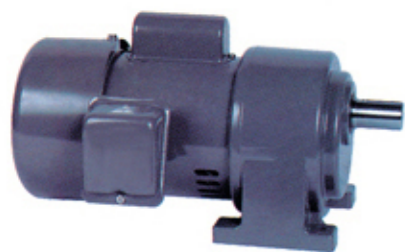
卧式高速比双轴 HORIZONTAL HIGH RATIO TYPE(Dimension in mm)

马力 KW	减速比 RATIO	型号 SIZE(S)	A	D	E	F	G	H	J	K	L	M	X	Y
100W 1/8 HP	250-1800	28	290	90	140	178	120	11	39	68	17	77	178	116
200W 1/4 HP	250-1800	32	340	130	170	210	165	13	47.5	70	23	92.5	212	140
400W 1/2 HP	250-1800	40	455	150	210	265	198	15	59	89	34	103	250	162
750W 1 HP	250-1800	50	515	170	265	321	238	18	74	120	31.5	126	308	200

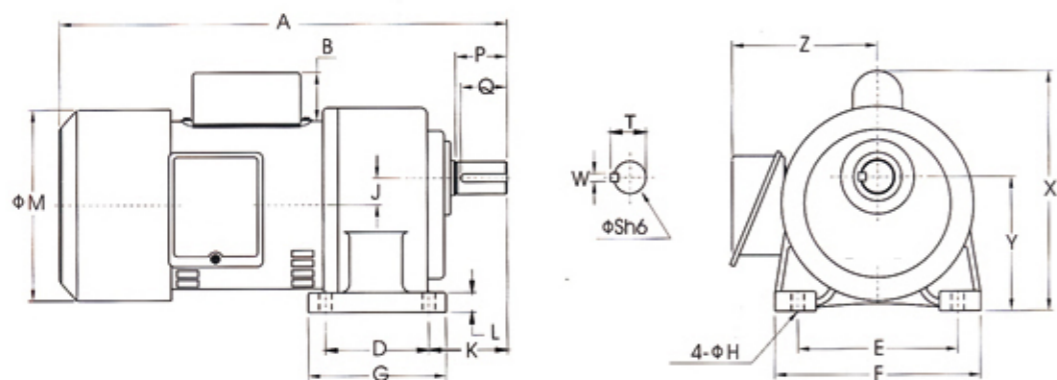
立式高速比双轴 VERTICAL HIGH RATIO TYPE(Dimension in mm)

马力 KW	减速比 RATIO	型号 SIZE(S)	A	D	E	F	G	H	J	K	L	Y
100W 1/8 HP	250-1800	28	290	170	220	205	195	12	39	58	13	3
200W 1/4 HP	250-1800	32	340	185	255	248	225	15	47.5	65	16	3
400W 1/2 HP	250-1800	40	455	230	310	291	272	15	59	85	21	5
750W 1 HP	250-1800	50	515	280	390	372	342	18	74	92	25	5

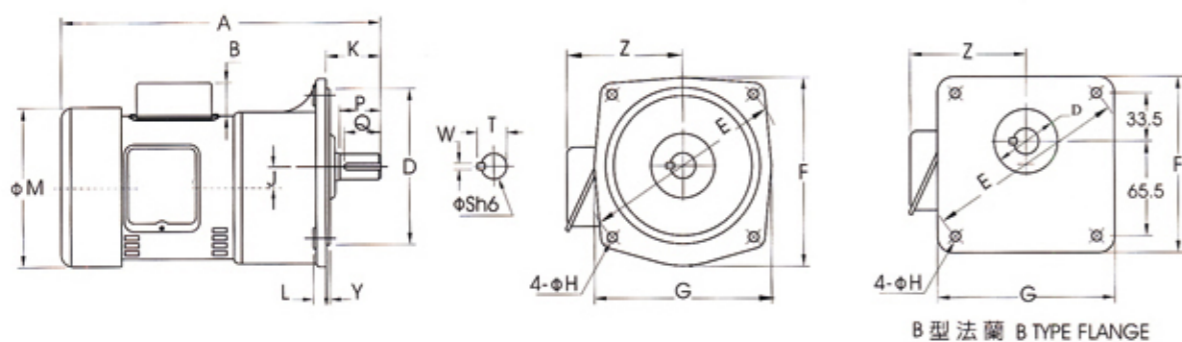


GH..AT 卧式附单相半密  
GH..AT HORIZONTAL TYPEGV..AT 立式附单相半密  
GV..AT VERTICAL TYPE

## 卧式附单相半密 HORIZONTAL TYPE



## 立式附单相半密 VERTICAL TYPE



B型法蘭 B TYPE FLANGE

## 出力轴尺寸 OUTPUT SHAFT

型番 SIZE(S)	出力轴 SHAFT		键槽 KEYWAY			键 KEY
	S h6	P	W	T	Q	
18	φ 18	30	5	20.2	27	5*5*27
22	φ 22	40	7	25	35	7*7*35
28	φ 28	45	7	31.1	40	7*7*40
32	φ 32	55	10	35.5	50	10*8*50
40	φ 40	65	10	43.5	60	10*8*60
50	φ 50	80	14	54	75	14*9*75

适用机型 APPLICABLE MODELS: GH..AT, GH..ATB, GV..AT, GV..ATB

WITH STEEL PLATE 1-PHASE(BRAKE) MOTOR

## 卧式附单相半密 HORIZONTAL TYPE(Dimension in mm)

马力 KW	减速比 RATIO	本体 CODE	型号 SIZE(S)	A	B	D	E	F	G	H	J	K	L	M	X	Y	Z
100W 1/8 HP	3-50	1#	18	250		40	110	135	65	9	16	50	10	127	138	88.5	120
	60-200	2#	22	280		65	130	158	90	11	17.5	60	13	127	152	97.5	120
200W 1/4 HP	3-10	1#	18	280		40	110	135	65	9	16	50	10	127	138	88.5	120
	15-90	2#	22	310		65	130	158	90	11	17.5	60	13	127	152	97.5	120
	100-200	3#	28	340		90	140	178	120	11	23	68	17	127	178	116	120
400W 1/2 HP	3-10	2#	22	360	42	65	130	158	90	11	17.5	60	13	167	200	97.5	135
	15-90	3#	28	390	42	90	140	178	120	11	23	68	17	167	212	116	135
	100-200	4#	32	425	42	130	170	210	165	13	30	70	23	167	228	140	135
750W 1 HP	3-25	3#	28	410	48	90	140	178	120	11	23	68	17	167	222	116	135
	30-120	4#	32	445	48	130	170	210	165	13	30	70	23	167	238	140	135
	125-200	5#	40	500	48	150	210	265	198	15	36	89	24	167	257	162	135
1500W 2 HP	3-30	4#	32	450	48	130	170	210	165	13	30	70	23	177	250	140	146
	40-100	5#	40	500	48	150	210	265	198	15	36	89	24	177	250	162	146
	105-120	6#	50	560	48	170	265	321	238	18	51	120	31.5	177	306	200	146

## 立式附单相半密 VERTICAL TYPE(Dimension in mm)

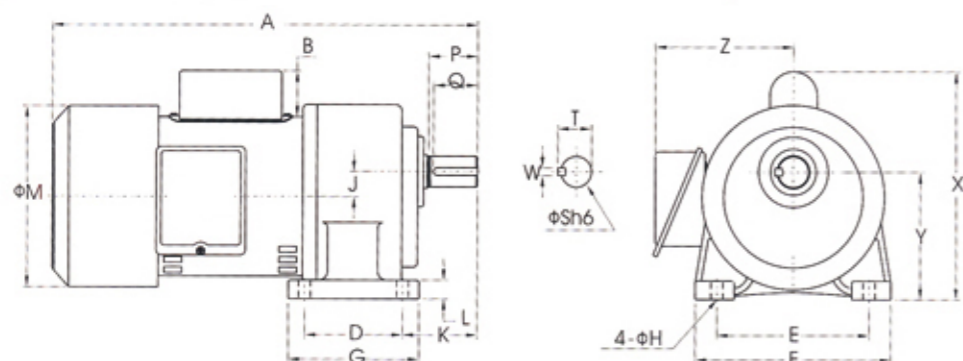
马力 KW	减速比 RATIO	本体 CODE	型号 SIZE(S)	A	B	D	E	F	G	H	J	K	L	M	Y	Z
100W 1/8 HP	3-50	1#	*18	245		50	140	120	120	9	16	40	12	127	6	120
	60-200	2#	22	280		148	185	175	165	11	17.5	48	12	127	3	120
200W 1/4 HP	3-10	1#	*18	280		50	140	120	120	9	16	40	12	127	6	120
	15-90	2#	22	310		148	185	175	165	11	17.5	48	12	127	3	120
	100-200	3#	28	340		170	220	205	195	12	23	58	13	127	3	120
400W 1/2 HP	3-10	2#	22	360	42	148	185	175	165	11	17.5	48	12	167	3	135
	15-90	3#	28	390	42	170	220	205	195	12	23	58	13	167	3	135
	100-200	4#	32	425	42	185	255	248	225	15	30	65	16	167	3	135
750W 1 HP	3-25	3#	28	410	48	170	220	205	195	12	23	58	13	167	3	135
	30-120	4#	32	445	48	185	255	248	225	15	30	65	16	167	3	135
	125-200	5#	40	500	48	230	310	291	272	15	36	85	21	167	5	135
1500W 2 HP	3-30	4#	32	450	48	185	255	248	225	15	30	65	16	177	3	146
	40-100	5#	40	500	48	230	310	291	272	15	36	85	21	177	5	146
	105-120	6#	50	560	48	280	390	372	342	18	51	92	25	177	5	146

备注: 1. 单相刹车马达尺寸另议. CONTACT FOR BRAKE TYPE DIMENSIONS.

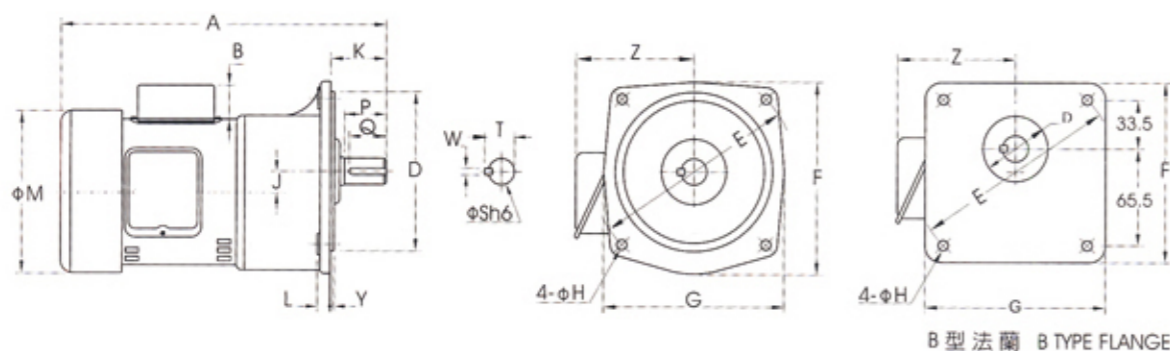
2. \* 属于B型出力法兰. BELONG TO B TYPE OUTPUT FLANGE.

GH..ATZ 卧式附单相缩框半密  
GH..ATZ HORIZONTAL LIGHT DUTY TYPEGV..ATZ 立式附单相缩框半密  
GV..ATZ VERTICAL LIGHT DUTY TYPE

## 卧式附单相缩框半密 HORIZONTAL LIGHT DUTY TYPE



## 立式附单相缩框半密 VERTICAL LIGHT DUTY TYPE



## 出力轴尺寸 OUTPUT SHAFT

型号 SIZE(S)	出力轴 SHAFT		键槽 KEYWAY			键 KEY
	S h6	P	W	T	Q	SPEC'
18	φ 18	30	5	20.2	27	5*5*27
22	φ 22	40	7	25	35	7*7*35
28	φ 28	45	7	31.1	40	7*7*40
32	φ 32	55	10	35.5	50	10*8*50
40	φ 40	65	10	43.5	60	10*8*60

适用机型APPLICABLE MODELS:GH..ATZ,GH..ATZB,GV..ATZ,GV..ATZB

## 卧式附单相缩框半密 HORIZONTAL LIGHT DUTY TYPE(Dimension in mm)

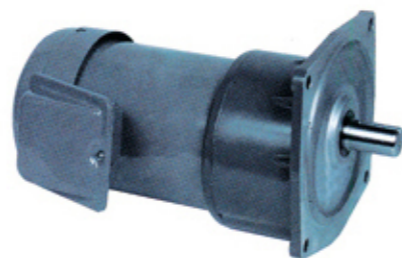
马力 KW	减速比 RATIO	本体 CODE	型号 SIZE(S)	A	B	D	E	F	G	H	J	K	L	M	X	Y	Z
100W 1/8 HP	60-160	1#	18	250		40	110	135	65	9	16	50	10	127	138	88.5	120
200W 1/4 HP	15-90	1#	18	280		40	110	135	65	9	16	50	10	127	138	88.5	120
	100-200	2#	22	310		65	130	158	90	11	17.5	60	13	127	152	97.5	120
400W 1/2 HP	15-90	2#	22	360	42	65	130	158	90	11	17.5	60	13	167	200	97.5	135
	100-175	3#	28	390	42	90	140	178	120	11	23	68	17	167	212	116	135
750W 1 HP	3-25	2#	22	380	48	65	130	158	90	11	17.5	60	13	167	210	97.5	135
	30-120	3#	28	410	48	90	140	178	120	11	23	68	17	167	222	116	135
1500W 2 HP	125-200	4#	32	445	48	130	170	210	165	13	30	70	23	167	238	140	135
	3-30	3#	28	415	48	90	140	178	120	11	23	68	17	177	225	116	146
	40-100	4#	32	450	48	130	170	210	165	13	30	70	23	177	250	140	146
	110-180	5#	40	500	48	150	210	265	198	15	36	89	24	177	255	162	146

## 立式附单相缩框半密 VERTICAL LIGHT DUTY TYPE(Dimension in mm)

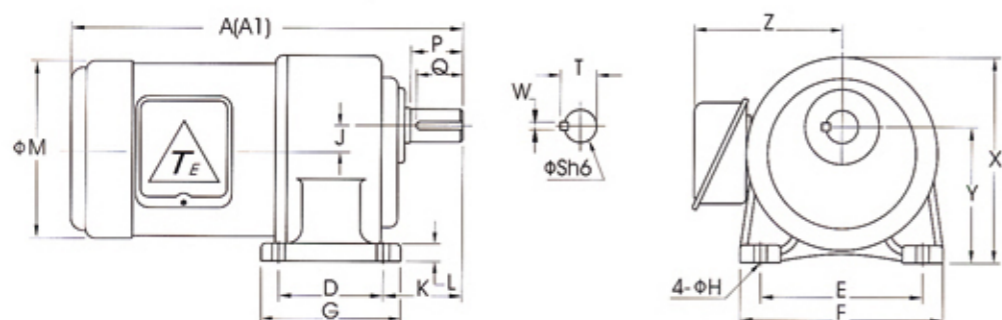
马力 KW	减速比 RATIO	本体 CODE	型号 SIZE(S)	A	B	D	E	F	G	H	J	K	L	M	Y	Z
100W 1/8 HP	60-160	1#	*18	250		50	140	120	120	9	16	40	12	127	6	120
200W 1/4 HP	15-90	1#	*18	285		50	140	120	120	9	16	40	12	127	6	120
	100-200	2#	22	310		148	185	175	165	11	17.5	48	12	127	3	120
400W 1/2 HP	15-90	2#	22	360	42	148	185	175	165	11	17.5	48	12	127	3	135
	100-175	3#	28	390	42	170	220	205	195	12	23	58	13	127	3	135
750W 1 HP	3-25	2#	22	380	48	148	185	175	165	11	17.5	48	12	167	3	135
	30-120	3#	28	410	48	170	220	205	195	12	23	58	13	167	3	135
1500W 2 HP	125-200	4#	32	445	48	185	255	248	225	15	30	65	16	167	3	135
	3-30	3#	28	415	48	170	220	205	195	12	23	58	13	167	3	146
	40-100	4#	32	450	48	185	255	248	225	15	30	65	16	167	3	146
	110-150	5#	40	500	48	230	310	291	272	15	36	85	21	167	5	146

备注: 1. 单相刹车马达尺寸另议. CONTACT FOR BRAKE TYPE DIMENSIONS.

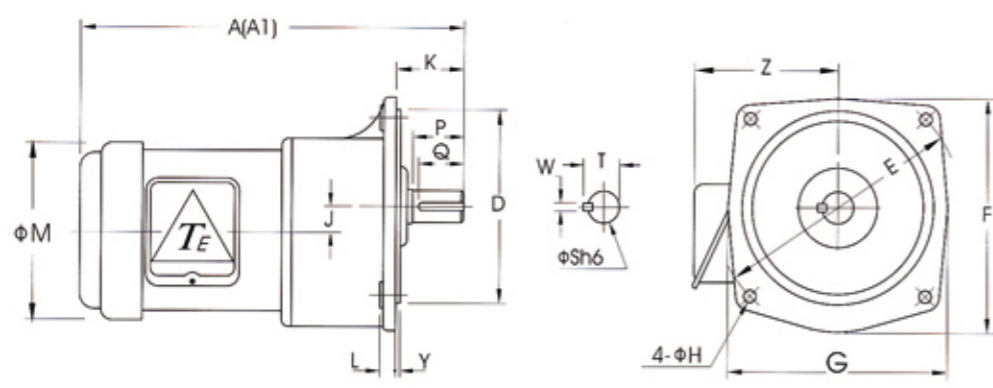
2. \* 属于B型出力法兰. \* BELONG TO B TYPE OUTPUT FLANGE.

GH..P 卧式附东元  
GH..P HORIZONTAL TYPEGV..P 立式附东元  
GV..P VERTICAL TYPE

## 卧式附东元 HORIZONTAL TYPE



## 立式附东元 VERTICAL TYPE



## 卧式附东元 HORIZONTAL TYPE(Dimension in mm)

马力 KW	减速比 RATIO	本体 CODE	型号 SIZE(S)	A	A1	D	E	F	G	H	J	K	L	M	X	Y	Z
200W 1/4 HP	3-90	2#	22	320	320	65	130	158	90	11	17.5	60	13	131	152	97.5	130
	100-200	3#	28	350	350	90	140	178	120	11	23	68	17	131	178	116	130
400W 1/2 HP	3-10	2#	22	330	330	65	130	158	90	11	17.5	60	13	144	152	97.5	135
	15-90	3#	28	360	360	90	140	178	120	11	23	68	17	144	178	116	135
	100-200	4#	32	390	390	130	170	210	165	13	30	70	23	144	212	140	135
750W 1 HP	3-25	3#	28	375	375	90	140	178	120	11	23	68	17	163	178	116	150
	30-120	4#	32	410	410	130	170	210	165	13	30	70	23	163	212	140	150
	125-200	5#	40	460	460	150	210	265	198	15	36	89	24	163	250	162	150
1500W 2 HP	3-30	4#	32	450	450	130	170	210	165	13	30	70	23	184	212	140	162
	40-100	5#	40	500	500	150	210	265	198	15	36	89	24	184	250	162	162
	105-120	6#	50	560	560	170	265	321	238	18	51	120	31.5	184	308	200	162

## 立式附东元 VERTICAL TYPE(Dimension in mm)

马力 KW	减速比 RATIO	本体 CODE	型号 SIZE(S)	A	A1	D	E	F	G	H	J	K	L	M	Y	Z
200W 1/4 HP	3-90	2#	22	320	320	148	185	175	165	11	17.5	48	12	131	3	130
	100-200	3#	28	350	350	170	220	205	195	12	23	58	13	131	3	130
400W 1/2 HP	3-10	2#	22	330	330	148	185	175	165	11	17.5	48	12	144	3	135
	15-90	3#	28	360	360	170	220	205	195	12	23	58	13	144	3	135
750W 1 HP	100-200	4#	32	390	390	185	255	248	225	15	30	65	16	144	3	135
	3-25	3#	28	375	375	170	220	205	195	12	23	58	13	163	3	150
	30-120	4#	32	410	410	185	255	248	225	15	30	65	16	163	3	150
1500W 2 HP	125-200	5#	40	460	460	230	310	291	272	15	36	85	21	163	5	150
	3-30	4#	32	450	450	185	255	248	225	15	30	65	16	184	3	162
	40-100	5#	40	500	500	230	310	291	272	15	36	85	21	184	5	162
105-120	6#	50	560	560	280	390	372	342	18	51	92	25	184	5	162	

备注: A : 三相铁壳东元马达. WITH 3-PHASE TECO MOTOR.

A1: 三相铁壳东元马达附刹车器. WITH 3-PHASE TECO BRAKE MOTOR.

## 出力轴尺寸 OUTPUT SHAFT

型号 SIZE(S)	出力轴 SHAFT			键槽 KEYWAY		键 KEY
	S h6	P	W	T	Q	SPEC'
22	φ 22	40	7	25	35	7*7*35
28	φ 28	45	7	31.1	40	7*7*40
32	φ 32	55	10	35.5	50	10*8*50
40	φ 40	65	10	43.5	60	10*8*60
50	φ 50	80	14	54	75	14*9*75

适用机型 APPLICABLE MODELS: GH..P, GH..PB, GV..P, GV..PB